



PRODUCT OVERVIEW

Enhancing quality of life through innovative solutions for nutrition.



ABOUT US

OUR MISSION

To enhance the quality of all human life, harness our passion, and delight our global family.

OUR VISION

Transforming the global nutritional experience with cutting edge products, happily consumed by millions, every day.



GOOD FOOD IS FOR EVERYONE

Flavour Creations is a specialist food and drink manufacturer dedicated to enhancing the quality of human life through food-first nutrition.

Since 1997, our range of thickened drinks, quality thickening powders, and advanced nutrition offerings have helped promote better patient outcomes. Our commitment to ongoing innovation and delicious, high-quality products has made Flavour Creations a global leader in dysphagia and medical nutrition.

As an Australian owned and operated company, we believe in delivering sustainable nutrition through locally sourced ingredients that support Aussie jobs. All our products are scientifically formulated by our team of food scientists, speech pathologists and dietitians, and are subject to rigorous quality and safety processes.

We also believe that empathy breeds innovation. By truly understanding the challenges faced by the people we serve, we can create products that restore dignity and nutritional health to individuals in hospital, aged care, and community-based settings.

DYSPHAGIA

Our award winning Aussie owned & made dysphagia cup and products have been created to empower people who experience difficulties holding and drinking from a cup.

After seven years of rigorous research and development, Flavour Creations launched the award-winning Dysphagia Cup. An innovation in accessible design, the patented Dysphagia Cup empowers individuals who currently experience difficulty holding their own cup to feed themselves independently.

AWARDS



LORD MAYOR'S BUSINESS AWARDS
2017

GOLD AWARD
QLD Urban Utilities Award
For Product Innovation



PIDA
PACKAGING INNOVATION AWARDS 2019
SILVER AWARD
Accessible Packaging Design



PIDA
PACKAGING INNOVATION AWARDS 2019
SILVER AWARD
Save Food Packaging



Clear Labelling

Easy Peel Lid

Embossed Texture

30mm

Improved Cup Rim

Unique Cup Shape

External Ribbing

DYSPHAGIA PATENT CUP AND HOLDER

Designed to criteria outlined in Arthritis Australia's Packaging Design Accessibility Guidelines, the Flavour Creations Dysphagia Cup has 6 key features for accessibility.

The Dysphagia Cup Holder has also been specifically designed, with large easy-grip handles to enable independence and restore dignity.

*Australian Patent No.2015234327.

DYSPHAGIA

HYDRATION

Boasting the largest range of thickened Ready-to-Drink products in Australia, available in four IDDSI compliant viscosities.



Flavoursome and thirst-quenching drinks specifically formulated for the dietary management of Dysphagia. With 21 flavours to captivate the imagination, staying hydrated has never been so satisfying.

• THICKENED READY-TO-DRINK •

| | | | | | |
|------------------------------------------------------------------------------------------------------------------------------------------------------------------------------------------------------------------------------------------------------------|-------------------------------------------------------------------------------------------------------------------------------------------------------------------------------------------------------------------------------------------------------------------------------------------------------------------------------------------------------------------------------------|------------------------------------------------------------------------------------------------------------------------------------------------------------------------------------------------------------------------------------------------------------|--------------------------------------------------------------------------------------------------------------------------------------------------------------------------------------------------------------------------------------------------------------------------------------------------------------------------------------------|--------------------------------------------------------------------------------------------------------------------------------------------------------------------------------------------------------------------------------------------------------------------------------------------------------------------------------------------------------------------------------------------------------------------------------------------------------------|---------------------------------------------------------------------------------------------------------------------------------------------------------------------------------------------------------------------------------------------------------------------------------------------------------------------------------------------------------------------------------------------------------------------------------------------|
| | | | | | |
| WATER | DIET DRINK | CORDIAL DRINKS | REAL FRUIT JUICES | FUNCTIONAL JUICES | HOT DRINKS |
| LOW SODIUM | LOW SUGAR | LOW SODIUM | LOW SODIUM | 99% FAT FREE | 99% FAT FREE |
| Water Watermelon Flavoured | Lemon | Raspberry Flavoured Citrus Flavoured Lime Flavoured | Apple Orange Sun | Cranberry Drink* Pear Juice | White Coffee White Tea |
| <ul style="list-style-type: none"> • Amylase Resistant™ • Gluten, Nut & Soy Free • Low Sodium • Fat Free • Dairy & Lactose Free • No Artificial Colours & Flavours • FSMP | <ul style="list-style-type: none"> • Amylase Resistant™ • Gluten, Nut & Soy Free • Low Sodium • GMO Free • Dairy & Lactose Free • Made with at least 9% real fruit juice • Diet - When compared to standard Flavour Creations Cordials • No Artificial Colours & Flavours • FSMP | <ul style="list-style-type: none"> • Amylase Resistant™ • Gluten, Nut & Soy Free • Low Sodium • Fat Free • Dairy & Lactose Free • No Artificial Colours & Flavours • FSMP | <ul style="list-style-type: none"> • Amylase Resistant™ • Gluten, Nut & Soy Free • Low Sodium • GMO Free • At least 83% Real Fruit Juice • Dairy & Lactose Free • No Artificial Colours & Flavours • Vegetarian • Vegan • FSMP | <ul style="list-style-type: none"> • Amylase Resistant™ • Gluten, Nut & Soy Free • Dairy & Lactose Free • GMO Free • No Artificial Colours & Flavours • FSMP <p>Pear Juice</p> <ul style="list-style-type: none"> • Good Source of Fibre • 96% Real Fruit Juice • Low Sodium <p>*Cranberry Drink only available in Level 2 Mildly Thick.</p> | <ul style="list-style-type: none"> • Amylase Resistant™ • Gluten, Nut & Soy Free • No Artificial Colours & Flavours • Low Sodium • GMO Free • FSMP <p>White Coffee</p> <ul style="list-style-type: none"> • 99% Fat Free <p>White Tea</p> <ul style="list-style-type: none"> • Fat Free • Dairy & Lactose Free |

NUTRITION INFORMATION (AVG QTY) (Level 3 - Moderately Thick)

| WATER | DIET LEMON | RASPBERRY | APPLE JUICE | PEAR JUICE | WHITE COFFEE |
|----------------------------|----------------------------|----------------------------|----------------------------|----------------------------|----------------------------|
| | | | | | |
| Serving Size: 175mL | Serving Size: 175mL | Serving Size: 175mL | Serving Size: 175mL | Serving Size: 175mL | Serving Size: 175mL |
| Per Serve | Per Serve | Per Serve | Per Serve | Per Serve | Per Serve |
| Per 100mL | Per 100mL | Per 100mL | Per 100mL | Per 100mL | Per 100mL |
| Energy kJ 55 | Energy kJ 116 | Energy kJ 427 | Energy kJ 360 | Energy kJ 330 | Energy kJ 160 |
| Energy kcal 13 | Energy kcal 28 | Energy kcal 102 | Energy kcal 86 | Energy kcal 79 | Energy kcal 38 |
| Protein g 0.1 | Protein g 0.2 | Protein g 0.1 | Protein g 0.3 | Protein g 0.2 | Protein g 1.5 |
| - Gluten mg Not detected | - Gluten mg Not detected | - Gluten mg Not detected | - Gluten mg Not detected | - Gluten mg Not detected | - Gluten mg Not detected |
| Fat, total g 0 | Fat, total g 0.1 | Fat, total g 0 | Fat, total g 0.1 | Fat, total g 0.1 | Fat, total g 1.0 |
| - Saturated fat g 0 | - Saturated fat g 0 | - Saturated fat g 0 | - Saturated fat g 0 | - Saturated fat g 0 | - Saturated fat g 0.7 |
| Carbohydrates g 2.4 | Carbohydrates g 5.8 | Carbohydrates g 24.4 | Carbohydrates g 19.4 | Carbohydrates g 17.1 | Carbohydrates g 4.6 |
| - sugars g 2.3 | - sugars g 4.1 | - sugars g 23.9 | - sugars g 19.1 | - sugars g 15.9 | - sugars g 3.3 |
| - lactose g 0 | - lactose g 0 | - lactose g 0 | - lactose g 0 | - lactose g 0 | - lactose g 1.5 |
| - galactose g 0 | - galactose g 0 | - galactose g 0 | - galactose g 0 | - galactose g 0 | - galactose g 0 |
| Dietary fibre g 1.7 | Dietary fibre g 1.6 | Dietary fibre g 1.5 | Dietary fibre g 1.6 | Dietary fibre g 3.8 | Dietary fibre g 1.8 |
| Sodium mg 89 | Sodium mg 145 | Sodium mg 110 | Sodium mg 84 | Sodium mg 60 | Sodium mg 188 |
| Potassium mg 14 | Potassium mg 14 | Potassium mg 14 | Potassium mg 233 | Potassium mg 162 | Potassium mg 263 |

FSMP – Food for Special Medical Purposes.

DYSPHAGIA

SUPPLEMENTS + THICKENERS

Our ready-to-drink, Protein Fortified and Nutritionally Complete oral nutrition supplements (ONS) support nutrition and hydration for individuals with reduced appetite, decreased intake and/or increased nutritional requirements related to disease or injury. These high energy high protein ONS also support wound healing and the prevention and management of malnutrition.

Thickening drinks and texture modified foods? Our premium thickener, Instant THICK provides an easy One Sachet or One Scoop solution to thicken food and fluids for compliance at each IDDSI Level.

Instant THICK is quick, safe and easy-to-use - thicken water, cordial, juice, alcoholic, medicinal drinks and more.

• THICKENED SUPPLEMENTS •



CREAMY

UP TO 7g PROTEIN

Chocolate
Dairy
Strawberry Flavoured

- Amylase Resistant™
- Gluten, Nut & Soy Free
- Low Sodium
- Good Source of Vitamin D
- Good Source of Calcium
- Source of Protein
- GMO Free
- No Artificial Colours & Flavours
- FSMP



PROTEIN FORTIFIED

15g PROTEIN

Caramel Flavoured
Lemon Lime Flavoured

- Amylase Resistant™
 - 15g Protein
 - Good Source of Fibre
 - Gluten, Nut & Soy Free
 - No Artificial Colours & Flavours
 - FSMP
- Caramel**
- 1.5 kcal/mL
 - Lactose Free (Level 2 & 3)
- Lemon Lime**
- Fat Free
 - Dairy & Lactose Free



NUTRITIONALLY COMPLETE

15g PROTEIN

Apple Berry Flavoured
Chocolate
Iced Coffee Flavoured

- Amylase Resistant™
 - 15g Protein
 - 27 Vitamins & Minerals
 - 1.5 kcal/mL
 - Gluten, Nut & Soy Free
 - Good Source of Fibre
 - No Artificial Colours & Flavours
 - FSMP
- Chocolate**
- Low Lactose (Level 2 & 3)
 - High Vitamin D & Calcium
- Iced Coffee**
- Lactose Free
 - High Vitamin D & Calcium

• THICKENERS •



INSTANT THICK

POWDER

Single Serve Sachets
100g Can
675g Can
1.75kg Pail

- Amylase Resistant™
- One Scoop or Sachet per Serve
- Dissolves Clear
- Taste-Free to Improve Hydration
- Gluten, Nut, Soy, Dairy & Lactose Free
- No Added Colours, Flavours & Preservatives
- FSMP



THICKPLUS

POWDER

1kg Can

- Viscosity Remains Stable
- Easily Thickens Food & Drinks
- Taste Free
- Gluten, Nut & Soy Free
- Fat Free
- Dairy & Lactose Free
- No Artificial Colours & Flavours
- FSMP

NUTRITION INFORMATION (AVG QTY) (Level 3 - Moderately Thick)

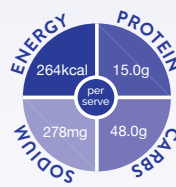
STRAWBERRY



| Serving Size: | Per Serve | Per 100mL |
|-----------------|-----------------|-----------|
| 175mL | | |
| Energy | kJ 620 | 354 |
| | kcal 149 | 85 |
| Protein | g 6.3 | 3.6 |
| - Gluten | mg Not detected | |
| Fat, total | g 4.8 | 2.7 |
| - Saturated fat | g 2.5 | 1.5 |
| Carbohydrates | g 20.4 | 11.7 |
| - sugars | g 17.8 | 10.2 |
| - lactose | g 4.6 | 2.6 |
| - galactose | g 0 | 0 |
| Dietary fibre | g 1.4 | 0.8 |
| Sodium | mg 177 | 101 |
| Potassium | mg 136 | 78 |
| Calcium | mg 264 | 151 |
| | (33% RDI*) | |
| Vitamin D | µg 2.5 | 1.4 |
| | (25% RDI*) | |

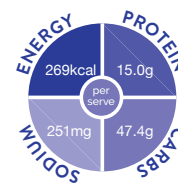
*RDI: Recommended Dietary Intake.

CARAMEL



| Serving Size: | Per Serve | Per 100 mL |
|-----------------|-----------------|------------|
| 175mL | | |
| Energy | kJ 1100 | 629 |
| | kcal 264 | 151 |
| Protein | g 15.0 | 8.6 |
| - Gluten | mg Not detected | |
| Fat, total | g 0 | 0 |
| - Saturated fat | g 0 | 0 |
| Carbohydrates | g 48.0 | 27.4 |
| - sugars | g 21.4 | 12.2 |
| - lactose | g 0 | 0 |
| - galactose | g 0 | 0 |
| Dietary fibre | g 4.0 | 2.3 |
| Sodium | mg 278 | 159 |
| Potassium | mg 12 | 7 |

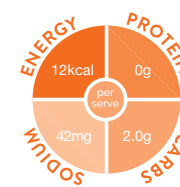
CHOCOLATE



| Serving Size: | Per Serve | Per 100mL |
|-----------------|-----------------|-----------|
| 175mL | | |
| Energy | kJ 1120 | 641 |
| | kcal 269 | 154 |
| Protein | g 15.0 | 8.6 |
| - Gluten | mg Not detected | |
| Fat, total | g 0.6 | 0.3 |
| - Saturated fat | g 0.3 | 0.2 |
| Carbohydrates | g 47.4 | 27.1 |
| - sugars | g 23.7 | 13.6 |
| - lactose | g 0.1 | 0.1 |
| - galactose | g 0 | 0 |
| Dietary fibre | g 6.5 | 3.7 |
| Sodium | mg 251 | 143 |
| Potassium | mg 387 | 221 |

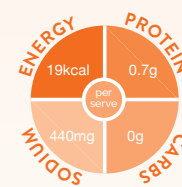
NUTRITION INFORMATION (AVG QTY) (Level 3 - Moderately Thick)

POWDER



| Serving Size: | Per Serve | Per 100g |
|-----------------|-----------------|----------|
| 3.4g | | |
| Energy | kJ 51 | 1490 |
| | kcal 12 | 358 |
| Protein | g 0 | 1.3 |
| - Gluten | mg Not detected | |
| Fat, total | g 0 | 0.1 |
| - Saturated fat | g 0 | 0 |
| Carbohydrates | g 2.0 | 59.6 |
| - sugars | g 0.1 | 3.5 |
| - lactose | g 0 | 0 |
| - galactose | g 0 | 0 |
| Dietary fibre | g 1.0 | 28.2 |
| Sodium | mg 42 | 1220 |
| Potassium | mg 6 | 185 |
| Phosphorus | mg 2 | 56 |

POWDER



| Serving Size: | Per Serve | Per 100g |
|-----------------|-----------------|----------|
| 11g | | |
| Energy | kJ 78 | 710 |
| | kcal 19 | 170 |
| Protein | g 0.7 | 6.0 |
| - Gluten | mg Not detected | |
| Fat, total | g 0 | 0 |
| - Saturated fat | g 0 | 0 |
| Carbohydrates | g 0 | 0 |
| - sugars | g 0 | 0 |
| - lactose | g 0 | 0 |
| - galactose | g 0 | 0 |
| Dietary fibre | g 8.2 | 76.0 |
| Sodium | mg 440 | 4000 |
| Potassium | mg 31.6 | 288 |

shape it™

ENHANCE THE DINING EXPERIENCE



Create Recognisable Food for People Living with Dysphagia

- ✓ Easily moulds foods to any shape, size and texture
- ✓ Doesn't alter flavour or colour
- ✓ Heat and freeze-thaw stable



ORDER NOW
FlavourCreations.com.au



SHAPE IT FOOD MOULDS
The easiest way to give texture-modified foods recognisable forms is with Shape It Food Moulds.

Boost Nutrition in just 1 Scoop

- ✓ Nutritionally Complete
- ✓ High Protein
- ✓ 27 Vitamins & Minerals
- ✓ Low GI
- ✓ Low Lactose
- ✓ Monash University Low FODMAP Certified™
- ✓ 28 Serves per Can

ORDER NOW
FlavourCreations.com.au

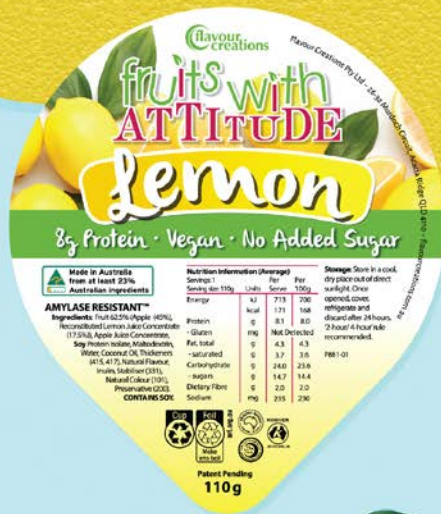
Suitable as a sole source of nutrition. Food for special medical purposes. Formulated to provide protein, energy, vitamins and minerals for medical conditions where nutritional needs cannot be met by diet modification alone. Use under medical supervision. Not for parenteral use. Not suitable for children under 1 year of age. Monash University Low FODMAP Certified trademarks used under licence in Australia and New Zealand by Flavour Creations. Monash University has assessed this product as being low in FODMAPs only. One serving of this product is low in FODMAPs.

NEW

fruits with ATTITUDE

KEEP LIFE ZESTY

Made with real fruit, Fruits with Attitude Lemon is vegan, and provides 8g of protein and a source of fibre in just a 110g serve. Start handing out a little Attitude... keep life zesty!



8G PROTEIN

NO ADDED SUGAR

100% VEGAN



ORDER NOW
FlavourCreations.com.au



PROTEIN BOOST
ANYTIME. ANYWHERE.

NEW FLAVOUR



ORDER NOW
FLAVOURCREATIONS.COM.AU



NUTRITION

NUTRITIONAL SUPPLEMENTS

Discover a wide range of high protein and nutritionally complete products from powder to mousse, fruit purees and puddings. Also explore our functional range to increase energy or fibre intake.

With a food first approach, Flavour Creations' nutritional supplements are high protein, moderate or high energy with 27 vitamins and minerals. Designed to support individuals with healthy ageing, wound care, injury and post-surgery recovery as well as for prevention and management of malnutrition.

• NUTRITIONALLY COMPLETE •



ADVITAL POWDER

15g PROTEIN

700g Can
4.4kg Pail

- Neutral Flavour
- Nutritionally Complete
- 15g Protein Per Serve
- 1 Scoop per Serve (25g)
- 27 Vitamins & Minerals
- Low GI
- Gluten, Nut & Soy Free
- Low Lactose
- No Artificial Colours & Flavours
- FSMP



ADVITAL MOUSSE

8g PROTEIN

Chocolate

- 8g Protein
- 27 Vitamins & Minerals
- 1.3 kcal/g
- Gluten & Nut Free
- Source of Fibre
- No Artificial Colours & Flavours
- IDDSI Level 4 Pured
- FSMP



ADVITAL SMOOTH FRUITS

15g PROTEIN

Apple & Plum
Banana & Mango

- 15g Protein
- 27 Vitamins & Minerals
- 1.5 kcal/g
- Gluten, Nut & Soy Free
- Low Fat
- Lactose Free
- No Artificial Colours & Flavours
- IDDSI Level 4 Pured
- FSMP



NUTRITIONALLY COMPLETE PUDDINGS

15g PROTEIN

Apple Berry Flavoured
Chocolate
Iced Coffee Flavoured

- 15g Protein
- 27 Vitamins & Minerals
- 1.5 kcal/mL
- Gluten, Nut & Soy Free
- Good Source of Fibre
- No Artificial Colours & Flavours
- FSMP

Chocolate

- High Vitamin D and Calcium

Iced Coffee

- Lactose Free
- High Vitamin D and Calcium

• FUNCTIONAL •



FUNCTIONAL JUICE

4g FIBRE

Pear Juice

- Good Source of Fibre
- 96% Real Fruit Juice
- 99% Fat Free
- Gluten, Nut & Soy Free
- Low Sodium
- Dairy & Lactose Free
- GMO Free
- No Artificial Colours & Flavours



CARB PLUS

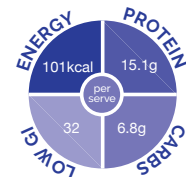
GLUCOSE POLYMER

1kg Can

- Energy Supplement
- Tasteless
- Low Sodium
- Fat Free
- Dairy & Lactose Free
- Gluten & Soy Free
- No Added Colours, Flavours or Preservatives

NUTRITION INFORMATION (AVG QTY)

ADVITAL POWDER



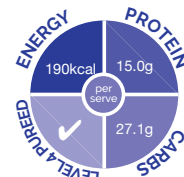
| | Serving Size: 25g | Per Serve | Per 100g |
|-----------------|-------------------|-----------|--------------|
| Energy | | | |
| | | kJ | 420 |
| | | kcal | 101 |
| Protein | | g | 15.1 |
| - Gluten | | mg | Not detected |
| Fat, total | | g | 1.1 |
| - Saturated fat | | g | 1.0 |
| Carbohydrates | | g | 6.8 |
| - sugars | | g | 1.1 |
| - lactose | | g | 0.4 |
| - galactose | | g | 0 |
| Dietary fibre | | g | 0 |
| Sodium | | mg | 66 |
| Potassium | | mg | 80 |

ADVITAL MOUSSE



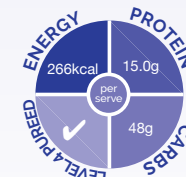
| | Serving Size: 110g | Per Serve | Per 100g |
|-----------------|--------------------|-----------|--------------|
| Energy | | | |
| | | kJ | 647 |
| | | kcal | 155 |
| Protein | | g | 8.1 |
| - Gluten | | mg | Not detected |
| Fat, total | | g | 3.7 |
| - Saturated fat | | g | 2.4 |
| Carbohydrates | | g | 20.7 |
| - sugars | | g | 17.8 |
| - lactose | | g | 5.7 |
| - galactose | | g | 0 |
| Dietary fibre | | g | 3.6 |
| Sodium | | mg | 182 |
| Potassium | | mg | 203 |

APPLE & PLUM



| | Serving Size: 120g | Per Serve | Per 100g |
|-----------------|--------------------|-----------|--------------|
| Energy | | | |
| | | kJ | 790 |
| | | kcal | 190 |
| Protein | | g | 15.0 |
| - Gluten | | mg | Not detected |
| Fat, total | | g | 0.3 |
| - Saturated fat | | g | 0.1 |
| Carbohydrates | | g | 27.1 |
| - sugars | | g | 18.6 |
| - lactose | | g | 0 |
| - galactose | | g | 0 |
| Dietary fibre | | g | 5.4 |
| Sodium | | mg | 178 |
| Potassium | | mg | 150 |

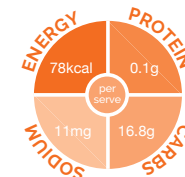
ICED COFFEE



| | Serving Size: 175mL | Per Serve | Per 100mL |
|-----------------|---------------------|-----------|--------------|
| Energy | | | |
| | | kJ | 1110 |
| | | kcal | 266 |
| Protein | | g | 15.0 |
| - Gluten | | mg | Not detected |
| Fat, total | | g | 0.1 |
| - Saturated fat | | g | 0 |
| Carbohydrates | | g | 48 |
| - sugars | | g | 21 |
| - lactose | | g | 0 |
| - galactose | | g | 0 |
| Dietary fibre | | g | 5.6 |
| Sodium | | mg | 349 |
| Potassium | | mg | 207 |

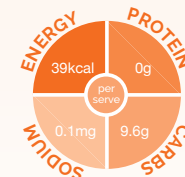
NUTRITION INFORMATION (AVG QTY)

PEAR JUICE



| | Serving Size: 175mL | Per Serve | Per 100mL |
|-----------------|---------------------|-----------|--------------|
| Energy | | | |
| | | kJ | 324 |
| | | kcal | 78 |
| Protein | | g | 0.1 |
| - Gluten | | mg | Not detected |
| Fat, total | | g | 0.1 |
| - Saturated fat | | g | 0 |
| Carbohydrates | | g | 16.8 |
| - sugars | | g | 15.7 |
| - lactose | | g | 0 |
| - galactose | | g | 0 |
| Dietary fibre | | g | 4.0 |
| Sodium | | mg | 11 |
| Potassium | | mg | 156 |

CARB PLUS



| | Serving Size: 10g | Per Serve | Per 100g |
|-----------------|-------------------|-----------|--------------|
| Energy | | | |
| | | kJ | 163 |
| | | kcal | 39 |
| Protein | | g | 0 |
| - Gluten | | mg | Not detected |
| Fat, total | | g | 0 |
| - Saturated fat | | g | 0 |
| Carbohydrates | | g | 9.6 |
| - sugars | | g | 1.1 |
| - lactose | | g | 0 |
| - galactose | | g | 0 |
| Dietary fibre | | g | 0 |
| Sodium | | mg | 0.1 |
| Potassium | | mg | 0 |

NUTRITION

HIGH PROTEIN SNACKS & DESSERTS

Flavour Creations has a wide range of real food solutions, such as custards and ice cream in a variety of flavours suitable as mid-meal and high protein snacks.

Recover is a small volume, fruity protein drink, with 11g protein in 110mL. Recover is specifically formulated for clear fluid diets and individuals with increased nutritional requirements, who cannot meet protein and energy intake through diet alone.

One taste of SCREAMIES no-melt ice cream and you'll be screaming for more! SCREAMIES is made with a delicious rich and velvety Aussie cream, perfect frozen or on-the-go.

• HIGH PROTEIN •



PROTEIN FORTIFIED PUDDINGS

15g PROTEIN

Caramel Flavoured
Lemon Lime Flavoured

- 15g Protein
- Good Source of Fibre
- Gluten, Nut & Soy Free
- No Artificial Colours & Flavours
- FSMP

Caramel

- 1.5 kcal/mL

Lemon Lime

- Fat Free
- Dairy & Lactose Free



RECOVER PROTEIN DRINK

11g PROTEIN

Watermelon Flavoured
Wildberry Flavoured

- 11g Protein
- 1.3 kcal/mL
- Dairy & Lactose Free
- Fat Free
- Clear Fluid
- Low Sodium
- Gluten, Nut & Soy Free



FRUITS WITH ATTITUDE

8g PROTEIN

Apple & Apricot
Banana & Mango
Lemon

- Amylase Resistant™
- 8g Protein
- Made with Real Fruit
- Dairy & Lactose Free
- No Artificial Colours & Flavours
- IDDSI Level 4 Pureed

Lemon

- Vegan
- 1.7 kcal/g
- No Added Sugar



SCREAMIES PROTEIN NO-MELT ICE CREAM

8g PROTEIN

Chocolate
Salted Caramel

- Amylase Resistant™
- 8g Protein
- 2.8 kcal/g
- Source of Calcium
- Contains a minimum 18% Milk Fat
- Gluten, Nut & Soy Free
- No Artificial Colours & Flavours
- IDDSI Level 4 Pureed
- Vegetarian

• DESSERTS •



SCREAMIES NO-MELT ICE CREAM

2.4 kcal/g

Vanilla Flavour
Chocolate
Strawberry

- Amylase Resistant™
- 2.4 kcal/g
- Source of Calcium
- Contains a Minimum 15% Milk Fat
- Gluten, Nut & Soy Free
- No Artificial Colours & Flavours
- IDDSI Level 4 Pureed
- Vegetarian Suitable (Vanilla & Chocolate)



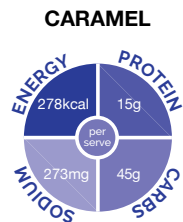
CUSTARD

SHELF STABLE

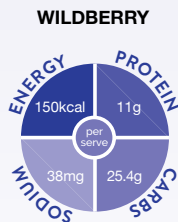
Strawberry Flavoured
Chocolate
Banana Flavoured
Vanilla Flavoured

- Amylase Resistant™
- 98% Fat Free
- Gluten, Nut & Soy Free
- Low Sodium
- No Artificial Colours & Flavours
- IDDSI Level 4 Pureed

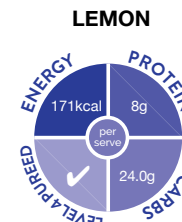
NUTRITION INFORMATION (AVG QTY)



| | Serving Size: 175mL | Per Serve | Per 100mL |
|-----------------|---------------------|-----------------|-----------|
| Energy | | kJ 1160 | 665 |
| | | kcal 278 | 160 |
| Protein | | g 15 | 8.6 |
| - Gluten | | mg Not detected | |
| Fat, total | | g 3.1 | 1.8 |
| - Saturated fat | | g 2.0 | 1.2 |
| Carbohydrates | | g 45.0 | 25.7 |
| - sugars | | g 22.7 | 13.0 |
| - lactose | | g 4.7 | 2.7 |
| - galactose | | g 0 | 0 |
| Dietary fibre | | g 4.0 | 2.3 |
| Sodium | | mg 273 | 156 |
| Potassium | | mg 138 | 79 |



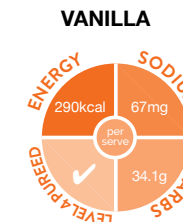
| | Serving Size: 110mL | Per Serve | Per 100mL |
|-----------------|---------------------|-----------------|-----------|
| Energy | | kJ 623 | 567 |
| | | kcal 150 | 136 |
| Protein | | g 11 | 10 |
| - Gluten | | mg Not detected | |
| Fat, total | | g 0 | 0 |
| - Saturated fat | | g 0 | 0 |
| Carbohydrates | | g 25.4 | 23.1 |
| - sugars | | g 5.6 | 5.1 |
| - lactose | | g 0 | 0 |
| - galactose | | g 0 | 0 |
| Dietary fibre | | g 0.2 | 0.2 |
| Sodium | | mg 38 | 35 |
| L-Arginine | | mg 880 | 800 |



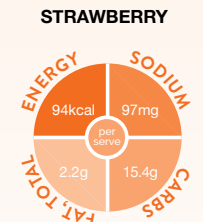
| | Serving Size: 110g | Per Serve | Per 100g |
|-----------------|--------------------|-----------------|----------|
| Energy | | kJ 713 | 700 |
| | | kcal 171 | 168 |
| Protein | | g 8.1 | 8.0 |
| - Gluten | | mg Not detected | |
| Fat, total | | g 4.3 | 4.3 |
| - Saturated fat | | g 3.7 | 3.6 |
| Carbohydrates | | g 24.0 | 23.6 |
| - sugars | | g 14.7 | 14.4 |
| - lactose | | g 0 | 0 |
| - galactose | | g 0 | 0 |
| Dietary fibre | | g 2.0 | 2.0 |
| Sodium | | mg 235 | 230 |
| Potassium | | mg 91 | 89 |



| | Serving Size: 120g | Per Serve | Per 100g |
|-----------------|--------------------|-----------------|----------|
| Energy | | kJ 1410 | 1170 |
| | | kcal 338 | 281 |
| Protein | | g 8.1 | 6.8 |
| - Gluten | | mg Not detected | |
| Fat, total | | g 22.1 | 18.4 |
| - Saturated fat | | g 13.4 | 11.1 |
| Carbohydrates | | g 26.8 | 22.3 |
| - sugars | | g 21.3 | 17.7 |
| - lactose | | g 4.1 | 3.4 |
| - galactose | | g 0 | 0 |
| Dietary fibre | | g 1.0 | 0.8 |
| Sodium | | mg 97 | 81 |
| Potassium | | mg 210 | 175 |



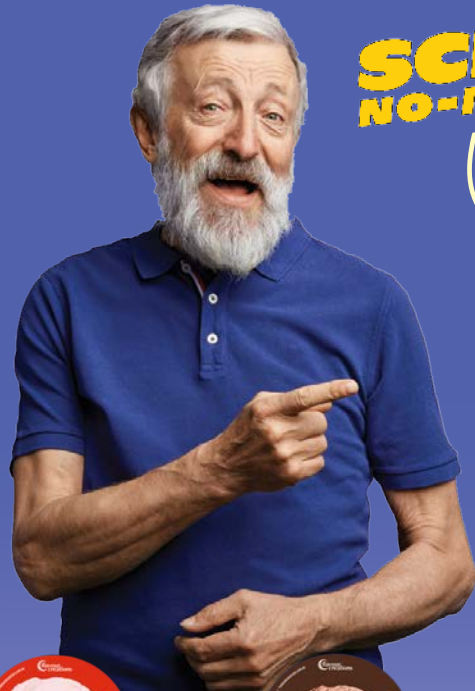
| | Serving Size: 120g | Per Serve | Per 100g |
|-----------------|--------------------|-----------------|----------|
| Energy | | kJ 1210 | 1010 |
| | | kcal 290 | 242 |
| Protein | | g 2.5 | 2.1 |
| - Gluten | | mg Not detected | |
| Fat, total | | g 15.7 | 13.1 |
| - Saturated fat | | g 9.5 | 7.9 |
| Carbohydrates | | g 34.1 | 28.4 |
| - sugars | | g 29.9 | 24.9 |
| - lactose | | g 4.1 | 3.4 |
| - galactose | | g 0 | 0 |
| Dietary fibre | | g 1.0 | 0.8 |
| Sodium | | mg 67 | 56 |
| Potassium | | mg 120 | 100 |
| Calcium | | mg 94 | 78.3 |



| | Serving Size: 115g | Per Serve | Per 100g |
|-----------------|--------------------|-----------------|----------|
| Energy | | kJ 390 | 339 |
| | | kcal 94 | 81 |
| Protein | | g 2.0 | 1.7 |
| - Gluten | | mg Not detected | |
| Fat, total | | g 2.2 | 1.9 |
| - Saturated fat | | g 1.5 | 1.3 |
| Carbohydrates | | g 15.4 | 13.4 |
| - sugars | | g 15.0 | 13.0 |
| - lactose | | g 3.4 | 2.9 |
| - galactose | | g 0 | 0 |
| Dietary fibre | | g 1.4 | 1.2 |
| Sodium | | mg 97 | 84 |
| Potassium | | mg 167 | 146 |
| Calcium | | mg 72 | 63 |

85% AUSSIE INGREDIENTS!

SCREAMIESTM NO-MELT ICE CREAM



- 2.4 kcal per gram
- No Artificial Colours & Flavours
- Deliciously Creamy
- IDDSI Level 4 Pureed
- Soy, Nut & Gluten Free
- Shelf Stable
- Tastiness on the Go!



ORDER NOW

FlavourCreations.com.au



MORE PROTEIN, LESS VOLUME.



NUTRITIONAL SUPPORT AT EVERY STAGE OF RECOVERY



LOW VOLUME
110mL per serve



HIGH ENERGY
623kJ per serve



HIGH PROTEIN
11g per serve



CLEAR FLUID



DAIRY FREE



ORDER NOW

FlavourCreations.com.au

SUPPORT PLATFORMS

WEBSITE

The Flavour Creations website offers an extensive range of dysphagia, nutrition and food service products. For full product information, videos, mixing guides and recipes visit our website today.

FlavourCreations.com.au

ELEARNING

Flavour Creations online resource centre has a range of training modules to help clients continually improve in the quality and level of service provided to their residents and or patients when using Flavour Creations products.

eLearning.FlavourCreations.com.au

FC@HOME

Flavour Creations @Home has been developed for healthcare professionals in the Community. To learn more about FC@Home to assist with servicing clients and for HEN, NDIS or Community Order Forms, please contact your local Business Development Manager.

FlavourCreations.com.au/business-development-team/

RIMMS

Resident Inventory Management & Monitoring System is an accurate inventory and ordering management system that ensures residents meet fluid requirements, provides annual budgets and automatically orders stock.

RIMMS.FlavourCreations.com.au



To enhance the quality of all human
life, harness our passion, and delight
our global family.

Contact Us

+61 7 3373 3000

Sales@FlavourCreations.com.au

FlavourCreations.com.au

Follow Us

